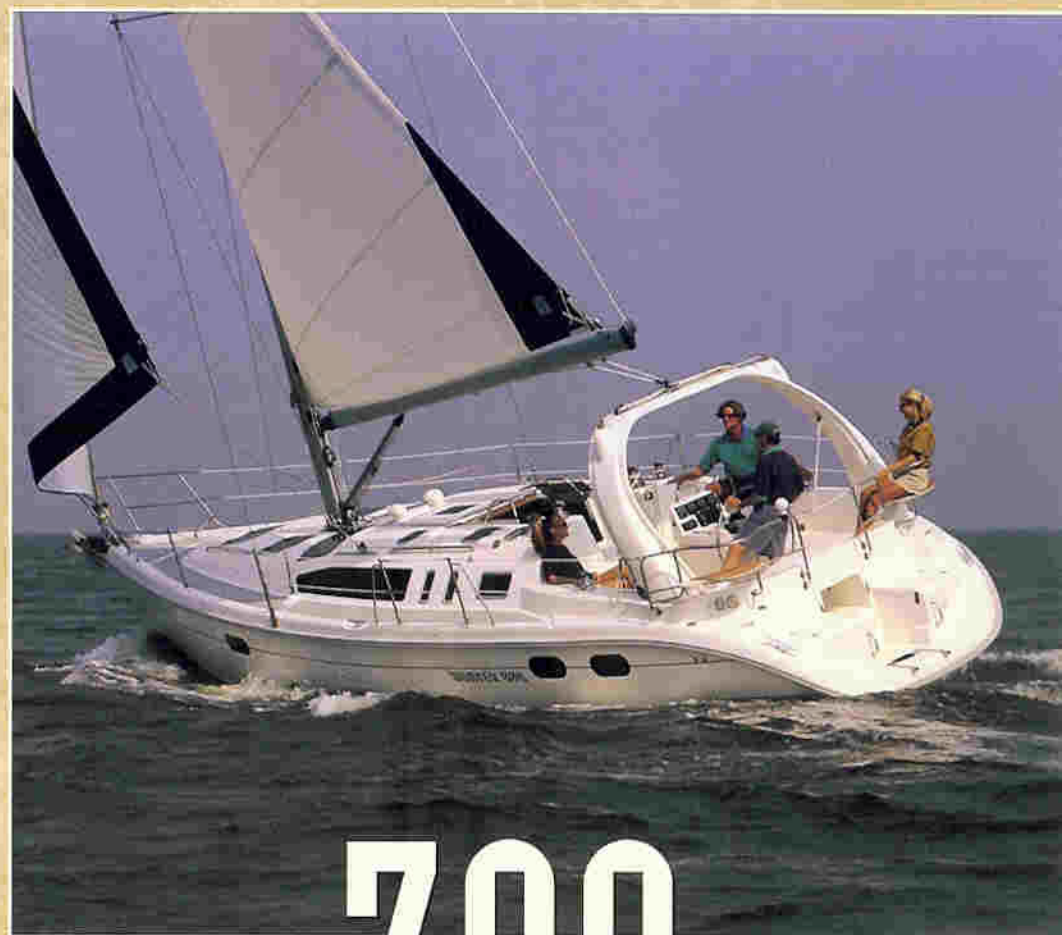


# HULLS THAT TAKE THE R

Σ R A I Z E



# 380

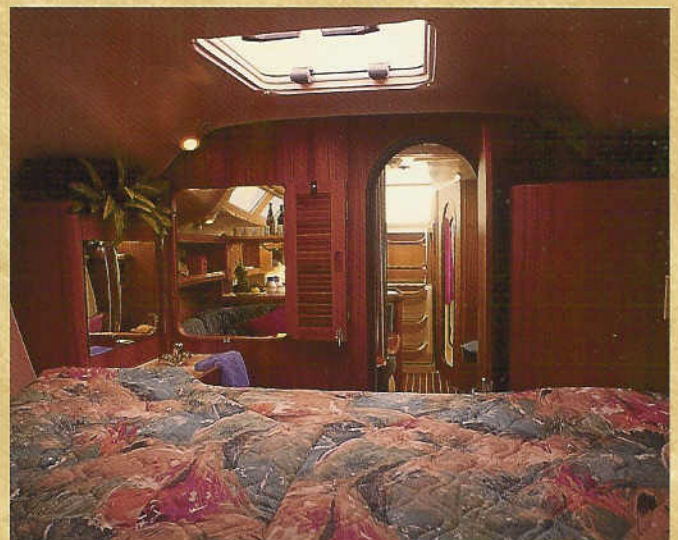
WE GO THE DISTANCE





at the integrated nav-station. A Corian® covered, full-service galley comes complete right down to the dishware and any chef will adore the side-by-side ice boxes and top-loading trash bin set each side of the double basin, stainless sink.

The private forward stateroom includes an ensuite vanity with sink and storage as well as plenty of hanging



locker space and drawer storage. Aft, you'll find the master stateroom with a huge queen berth and more storage. Privacy is enhanced by the dual access head that offers a Corian® covered vanity, electric marine head and shower stall all wrapped in a complete fiberglass shell for easy cleaning and maintenance. A tri-cabin version is also available for those who want to accommodate even more



**H**unter Marine's new 380 is an evolutionary boat that comes from the finest of innovation and consumer input Hunter has ever had. Comfort, convenience and livability is what the 380 is all about. Abundant natural light streams in from the Hunter signature windshield as well as the many fixed and screened ports; not to mention the multiple overhead hatches which also emit

a tremendous amount of fresh air. At anchor or at the dock, the placement of the ports assure you of great ventilation, and obviously, reverse cycle air and heat are an optional choice for your cruising comfort.

Entertaining or handling the family is easy with the enlarged salon complete with a convertible dinette and facing settee. Storage is plentiful as is electronic space

## SPECIFICATIONS

LOA	.....37'3" .....	11.35m
LWL	.....32'0" .....	9.75m
BEAM	.....12'7" .....	3.84m
DRAFT (shoal)	.....5'0" .....	1.52m
(deep)	.....6'6" .....	1.98m
DISP. (shoal)	.....16,000 lbs.....	7,264kg
(deep)	.....15,595 lbs.....	7,080kg
BALLAST (shoal)	.....5,900 lbs.....	2,679kg
(deep)	.....5,495 lbs.....	2,495kg
SAIL AREA		
(actual)	.....811 Sq ft .....	75.34m <sup>2</sup>
I	.....48'0" .....	14.63m
J	.....12'11" .....	3.94m
P	.....46'8" .....	14.22m
E	.....18'5" .....	5.62m
MAST HT (fr dwt)	.....59'6" .....	18.14m
HEADROOM	.....6'6" .....	1.98m
WATER CAP	.....75 gal .....	280L
HOLDING CAP	.....35 gal .....	130L
AUX. POWER-FRESHWATER COOLED		
STANDARD DIESEL	.....36 hp.....	26.8 kw
FUEL CAPACITY	.....30 gal.....	110L

\*All Measurements Approximate

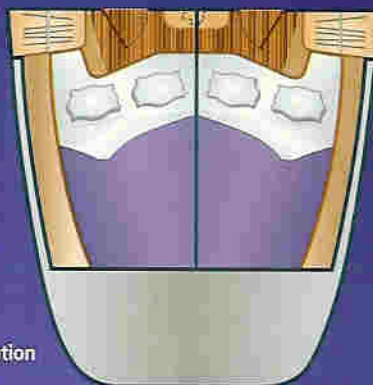
## WE GO THE DISTANCE!

The Hunter Marine Team is committed to crafting the best boat possible. To this goal we continue to develop innovative and affordable solutions to sailing's challenges, for this and the next generation of sailboats. It is our desire that your time on the water be the basis of your fondest memories.

Featuring  
**MAXGUARD®**  
enduring beauty™



Owner's Version



Tri-Cabin Option

